

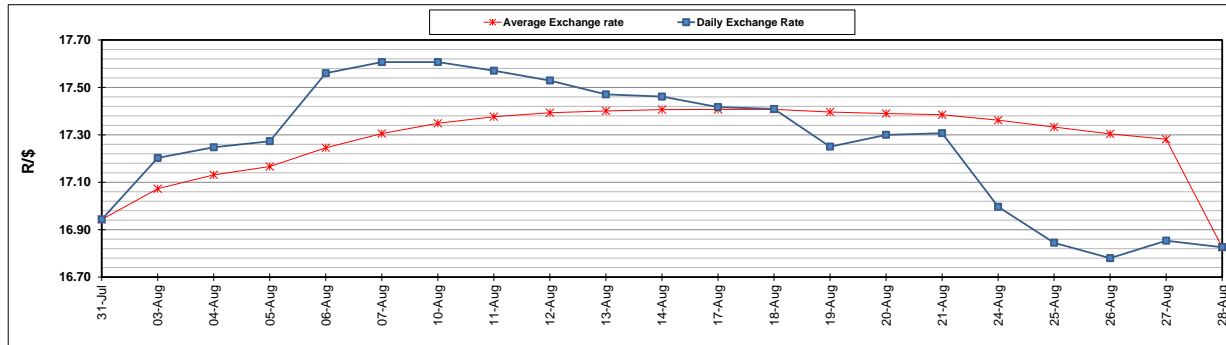
	PETROL 95 ULP	PETROL 93 ULP & LRP	DIESEL 0.05%	DIESEL 0.005%	ILL. PAR.
GAUTENG PUMP PRICE (SA c/l) AS FROM 02/09/2020	1,518.000	1,489.000	-	-	-
WHOLESALE PRICE (SA c/l) AS FROM 02/09/2020	-	-	1,327.560	1,331.960	716.828
SINGLE NATIONAL MAXIMUM RETAIL PRICE	-	-	-	-	899.000
BASIC FUEL PRICE - 28/08/2020 (SA c/l)	559.095	551.954	538.262	541.110	472.219
PRESS RELEASE CONTRIBUTION TO BFP 28/08/2020 - 28/08/2020 (SA c/l)	569.770	550.770	597.630	602.030	538.128
UNIT OVER/(UNDER) RECOVERY - 28/08/2020 (SA c/l)	10.675	(1.184)	59.368	60.920	65.909
AVERAGE BASIC FUEL PRICE 28/08/2020 - 28/08/2020	559.095	551.954	538.262	541.110	472.219
AVERAGE UNIT OVER/(UNDER) RECOVERY 28/08/2020 - 28/08/2020	10.675	(1.184)	59.368	60.920	65.909

ANALYSIS MOVEMENT OF AVERAGE OVER/(UNDER) RECOVERY

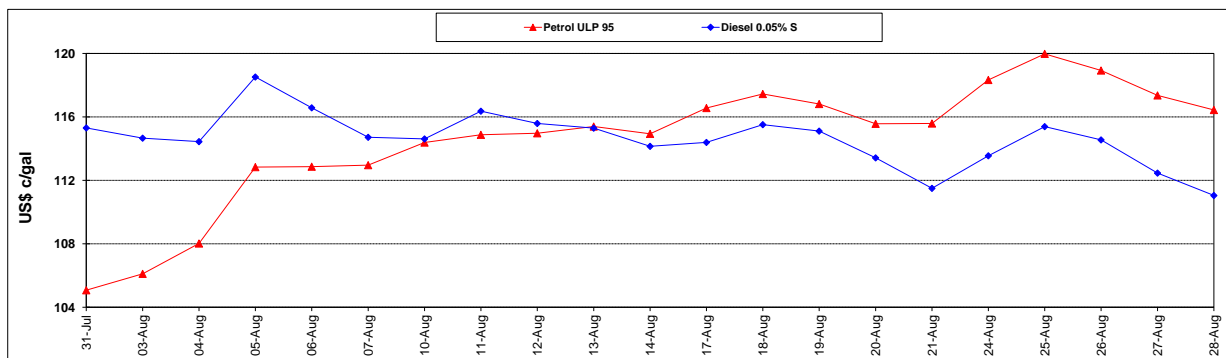
	PETROL 95	PETROL 93	DIESEL 0.05%	DIESEL 0.005%	ILL. PAR.
- MOVEMENT IN INTERNATIONAL PRODUCT PRICES	(4.457)	(16.123)	44.800	46.275	53.128
- MOVEMENT IN EXCHANGE RATE	15.132	14.939	14.568	14.645	12.781
AVERAGE UNIT OVER/(UNDER) RECOVERY 28/08/2020 - 28/08/2020	10.675	(1.184)	59.368	60.920	65.909

R/\$ EXCHANGE RATE - (R/\$16.826 - 28/08/2020)

EXCHANGE RATE USED IN BASIC FUEL PRICE



INTERNATIONAL PRODUCT PRICES OF BASKET USED IN BASIC FUEL PRICE



BASIC FUEL PRICE IN SA CENTS PER LITRE

